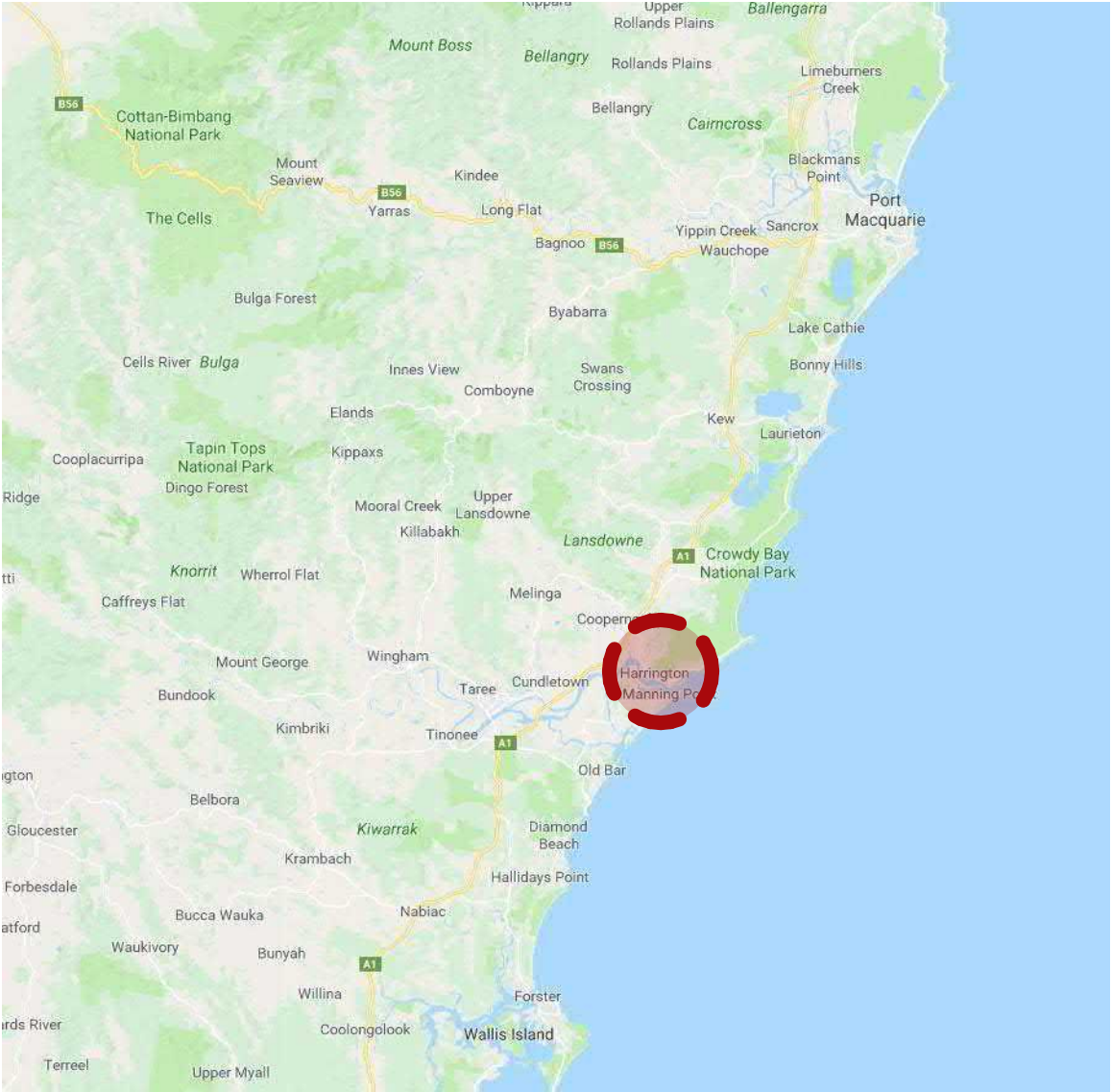
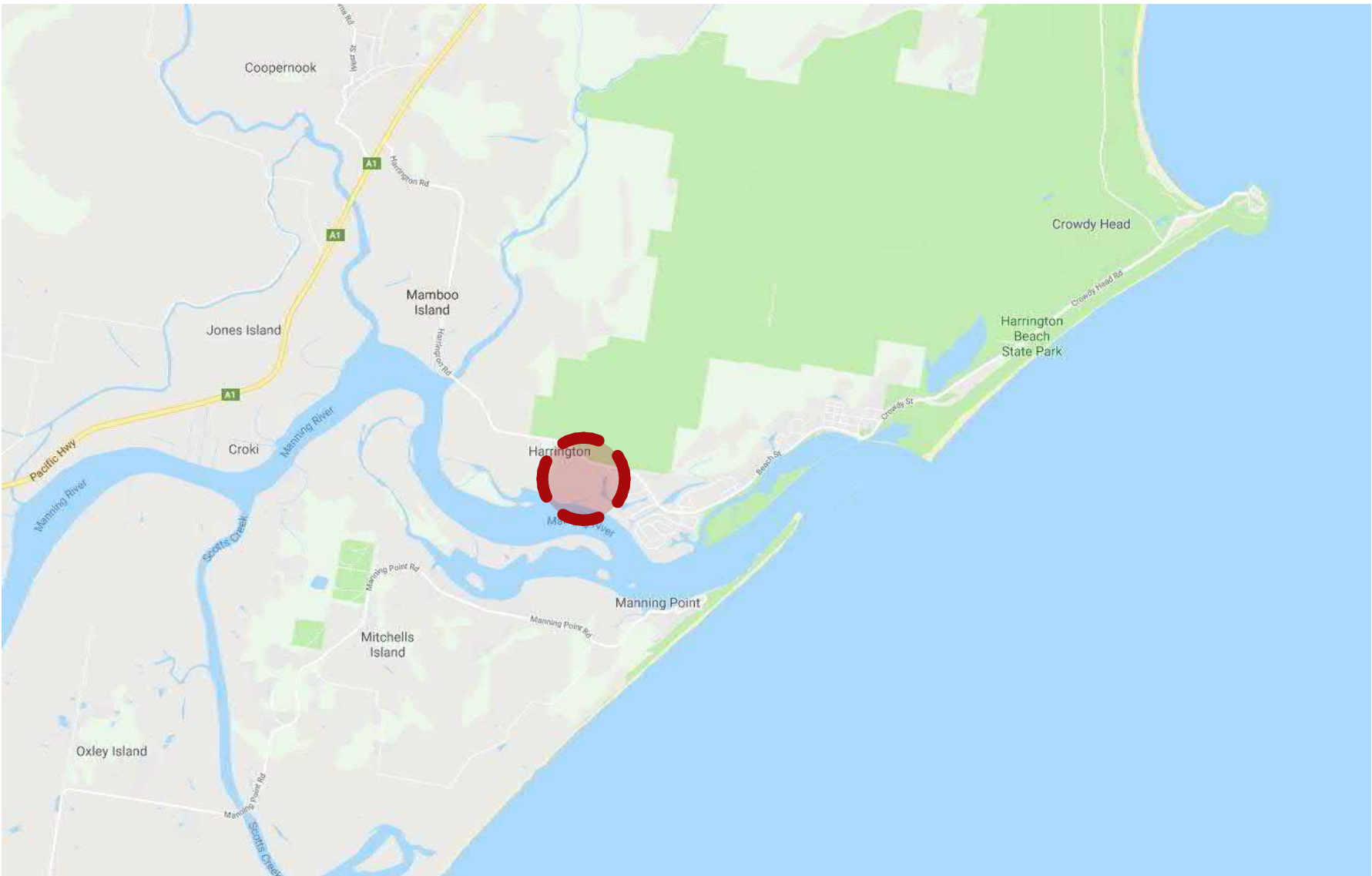


# HARRINGTON WATERS LIFESTYLE VILLAGE

LOT 2,4 & 6, DP 1219123, MANOR RD & HARRINGTON RD, HARRINGTON

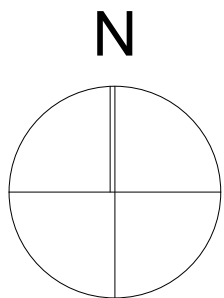


REGIONAL CONTEXT MAP

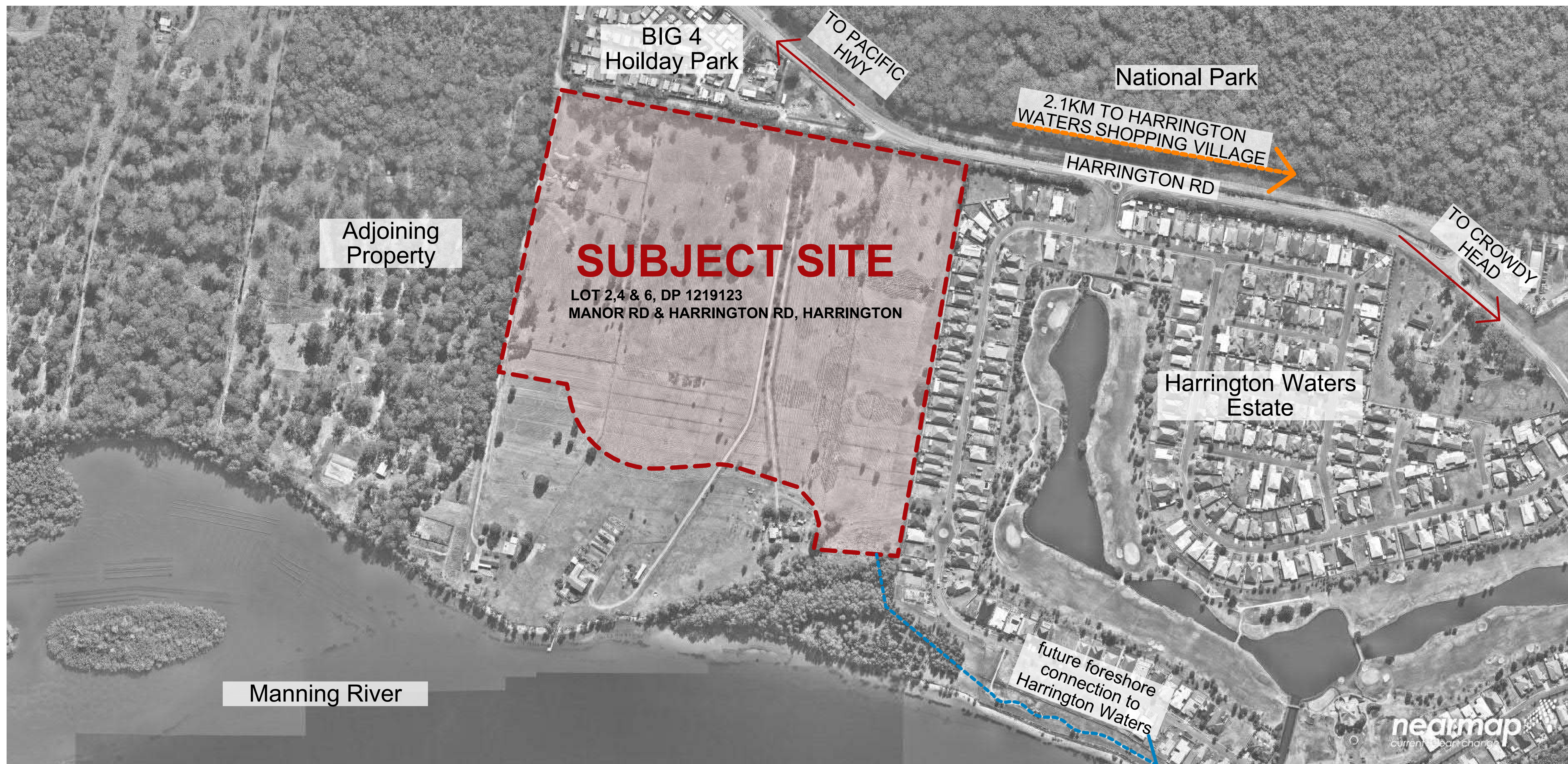


LOCAL CONTEXT MAP

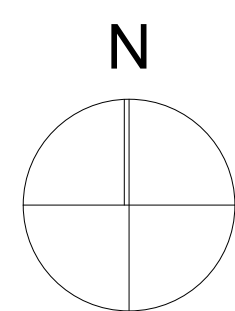
DA







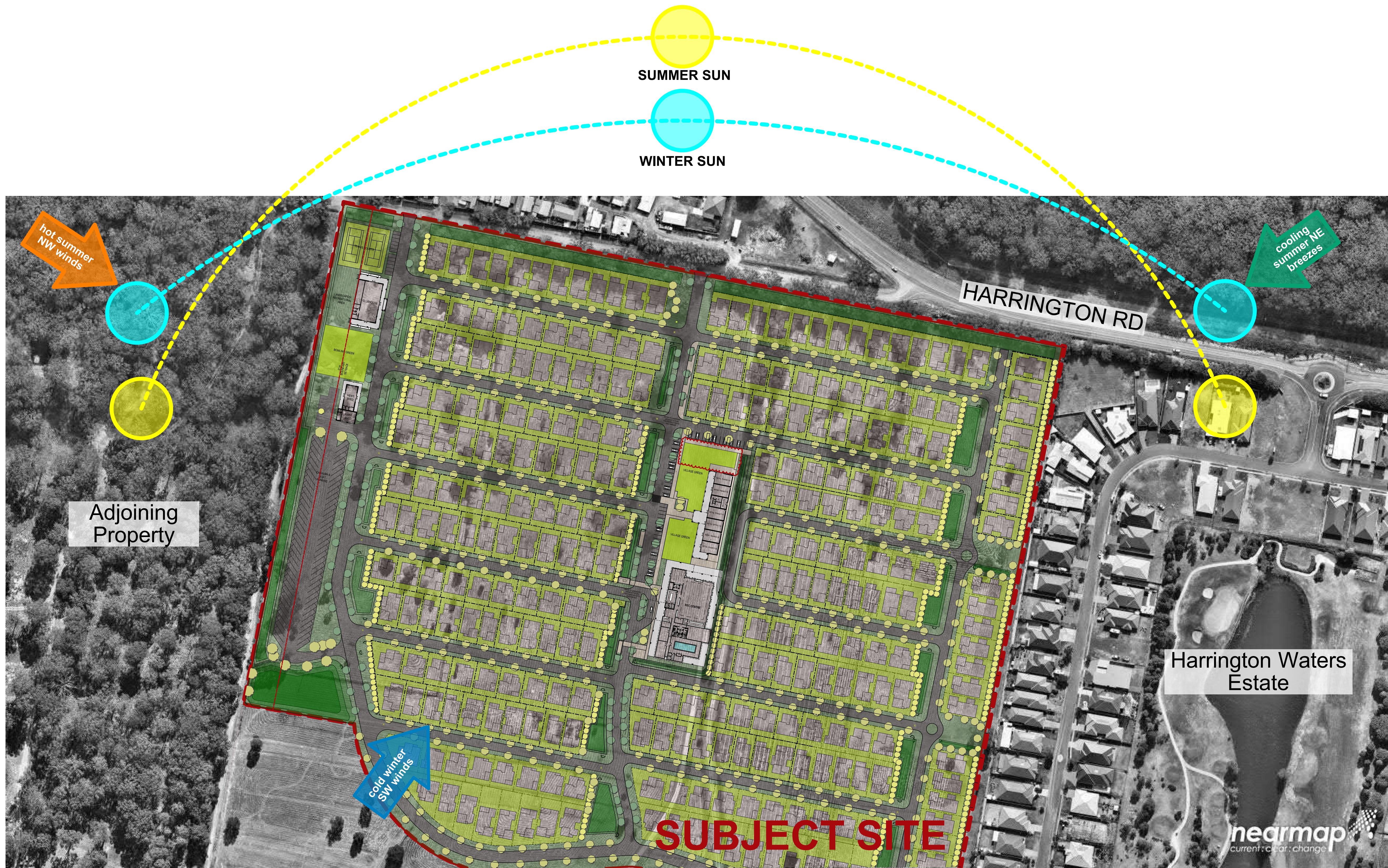
DA



# Harrington Waters Lifestyle Village

context analysis  
scale NTS





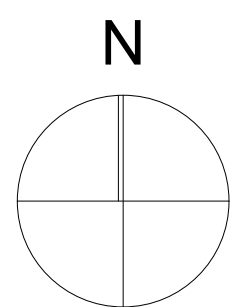
DA

11843-Central Facilities v21 [2a].pln - 31/07/2019  
11843 - a101 - July '19 - rev [c]

**EJE ARCHITECTURE**  
ACN 002 912 843 | ABN 82 644 649 849  
Nominated Architect - Bennett Collins  
NSW Architects Registration No.4438  
A 412 KING STREET NEWCASTLE NSW 2300 AUSTRALIA  
P +61 2 4929 2353 | F +61 2 4928 2300 | E mail@eje.com.au | W www.eje.com.au

COMPLETION OF THE QUALITY ASSURANCE CHECKS IS VERIFICATION THAT THE DOCUMENT CONFORMS WITH THE REQUIREMENTS OF THE QUALITY PROJECT PLAN, WHERE THE QUALITY ASSURANCE CHECK IS INCOMPLETE THIS DOCUMENT IS PRELIMINARY FOR INFORMATION PURPOSES ONLY OR SUCH PURPOSES AS STATED IN THE REVISION COLUMN.  
THE IDEAS, INFORMATION AND CONCEPTS CONTAINED IN THIS DOCUMENT ARE THE PROPERTY OF EJE ARCHITECTURE. PHOTOCOPYING OR REPRODUCING THIS DOCUMENT AND PASSING IT ON TO OTHERS WITHOUT THE EXPRESS PERMISSION OF EJE ARCHITECTURE IS AN INFRINGEMENT OF COPYRIGHT. ©

0 25mm 100mm 200mm ON ORIGINAL A1



# Harrington Waters Lifestyle Village

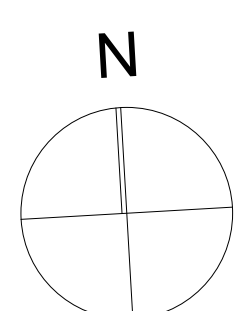
site analysis plan  
scale NTS

**EJE** architecture





11843-Central Facilities v21 [3].pln - 27/09/2019  
11843 - a102 - Sept '19 - rev [e]



# Harrington Waters Lifestyle Village

site masterplan  
scale 1 : 1000 @ A1

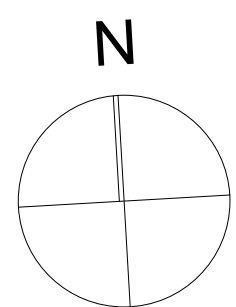




11843-Central Facilities v21 [2a].pln - 31/07/2019  
11843 - a103 - July '19 - rev [f]

**EJE ARCHITECTURE**  
ACN 002 912 843 | ABN 82 644 649 849  
Nominated Architect - Bernard Collins  
NSW Architects Registration No.4438  
A 412 KING STREET NEWCASTLE NSW 2300 AUSTRALIA  
P +61 2 4929 2353 | F +61 2 4928 2300 | E mail@eje.com.au | W www.eje.com.au

COMPLETION OF THE QUALITY ASSURANCE CHECKS IS VERIFICATION THAT THE DOCUMENT CONFORMS WITH THE REQUIREMENTS OF THE QUALITY PROJECT PLAN, WHERE THE QUALITY ASSURANCE CHECK IS INCOMPLETE THIS DOCUMENT IS PRELIMINARY FOR INFORMATION PURPOSES ONLY OR SUCH PURPOSES AS STATED IN THE REVISION COLUMN.  
THE IDEAS, INFORMATION AND CONCEPTS CONTAINED IN THIS DOCUMENT ARE THE PROPERTY OF EJE ARCHITECTURE. PHOTOCOPYING OR REPRODUCING THIS DOCUMENT AND PASSING IT ON TO OTHERS WITHOUT THE EXPRESS PERMISSION OF EJE ARCHITECTURE IS AN INFRINGEMENT OF COPYRIGHT. ©

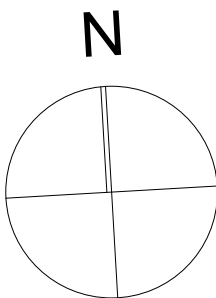


0 25mm 100mm 200mm ON ORIGINAL A1

# Harrington Waters Lifestyle Village

central facilities - site plan  
scale 1 : 500 @ A1





# Harrington Waters Lifestyle Village

clubhouse/mens shed - site plan  
scale 1 : 500 @ A1

11843-Central Facilities v21 [2a].pln - 31/07/2019  
11843 - a104 - Feb '19 - rev [c]

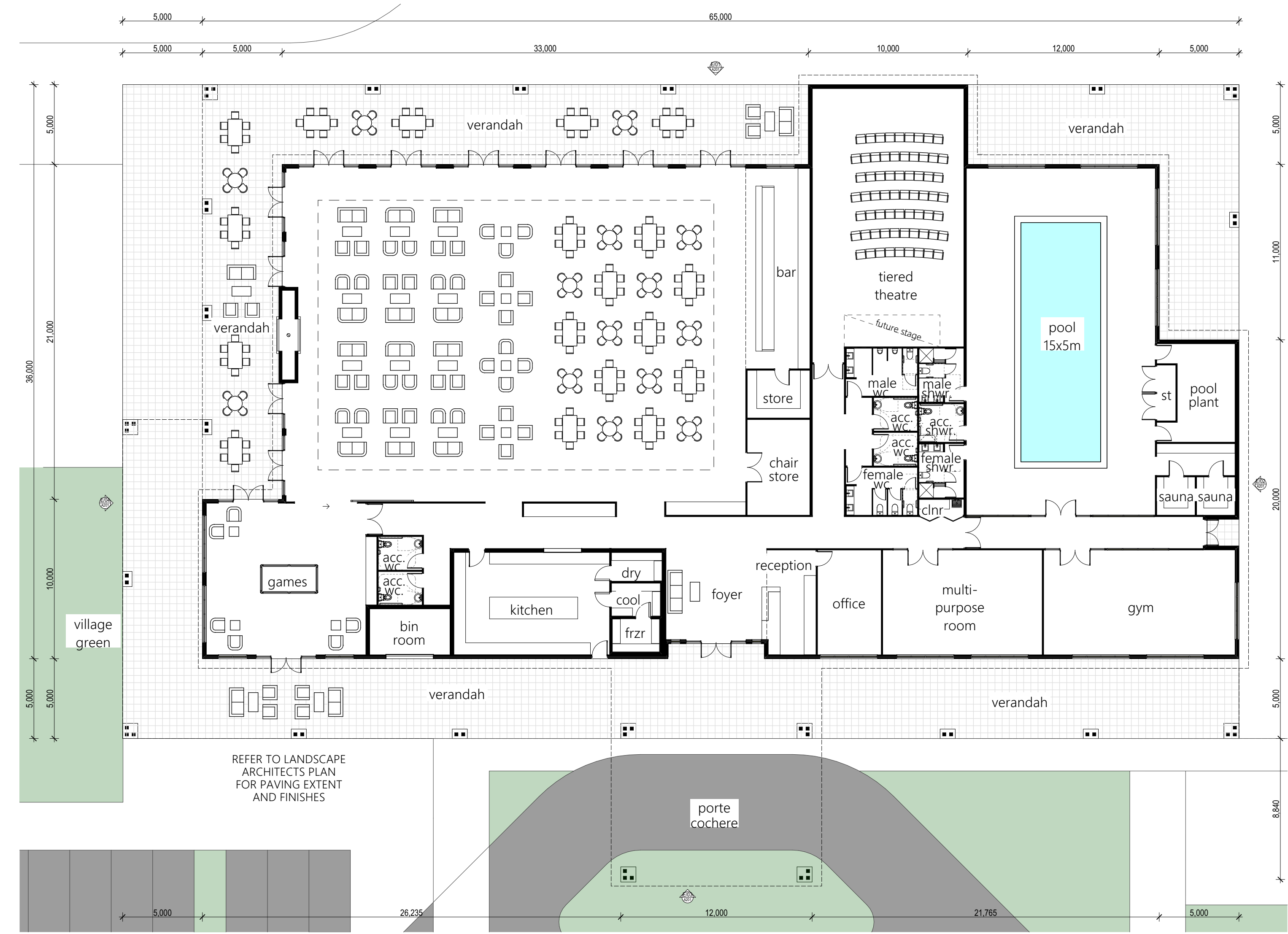




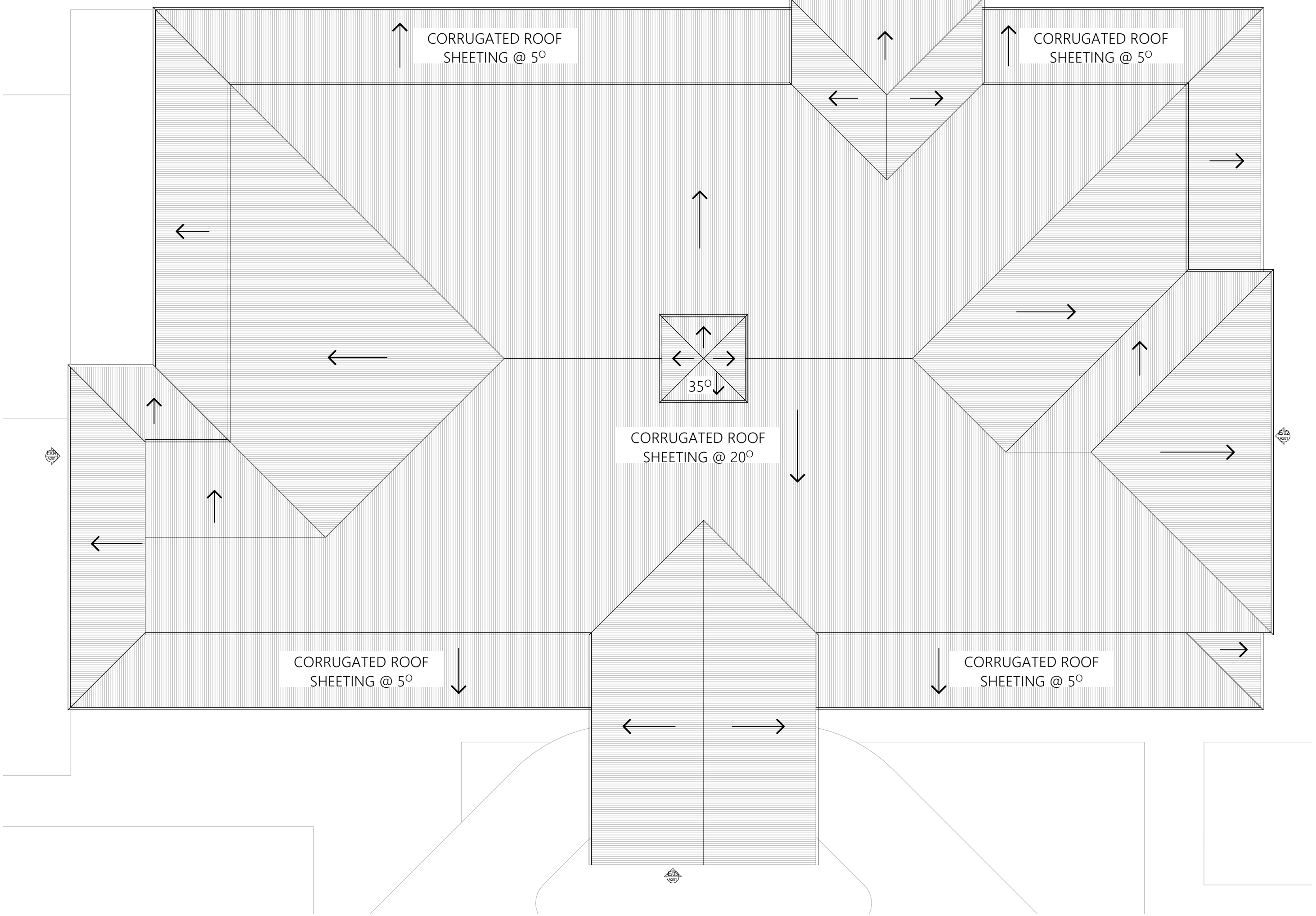
FLOOR AREA

REC. CENTRE = 1890m<sup>2</sup>  
REC. VERANDAH = 970m<sup>2</sup>

TOTAL = 2860m<sup>2</sup>



REC. FLOOR PLAN

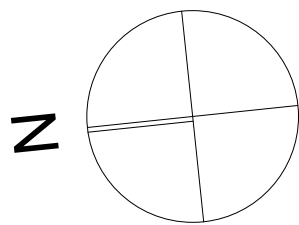


REC. ROOF PLAN

EJE ARCHITECTURE  
ACN 002 912 843 | ABN 82 644 649 949  
Nominated Architect - Bernard Collins  
NSW Architects Registration No. 4438  
A 412 KING STREET NEWCASTLE NSW 2300 AUSTRALIA  
P +61 2 4929 2353 | F +61 2 4926 2300 | E mail@eje.com.au | W www.eje.com.au

COMPLETION OF THE QUALITY ASSURANCE CHECKS IS VERIFICATION THAT THE DOCUMENT CONFORMS WITH THE REQUIREMENTS OF THE QUALITY PROJECT PLAN. WHERE THE QUALITY ASSURANCE CHECK IS INCOMPLETE THIS DOCUMENT IS PRELIMINARY FOR INFORMATION PURPOSES ONLY, OR SUCH PURPOSES AS STATED IN THE REVISION COLUMN.

THE IDEAS, INFORMATION AND CONCEPTS CONTAINED IN THIS DOCUMENT ARE THE PROPERTY OF EJE ARCHITECTURE. PHOTOCOPIING OR REPRODUCING THIS DOCUMENT AND PASSING IT ONTO OTHERS WITHOUT THE EXPRESS PERMISSION OF EJE ARCHITECTURE IS AN INFRINGEMENT OF COPYRIGHT. ©



0 25mm 100mm 200mm ON ORIGINAL A1

# Harrington Waters Lifestyle Village

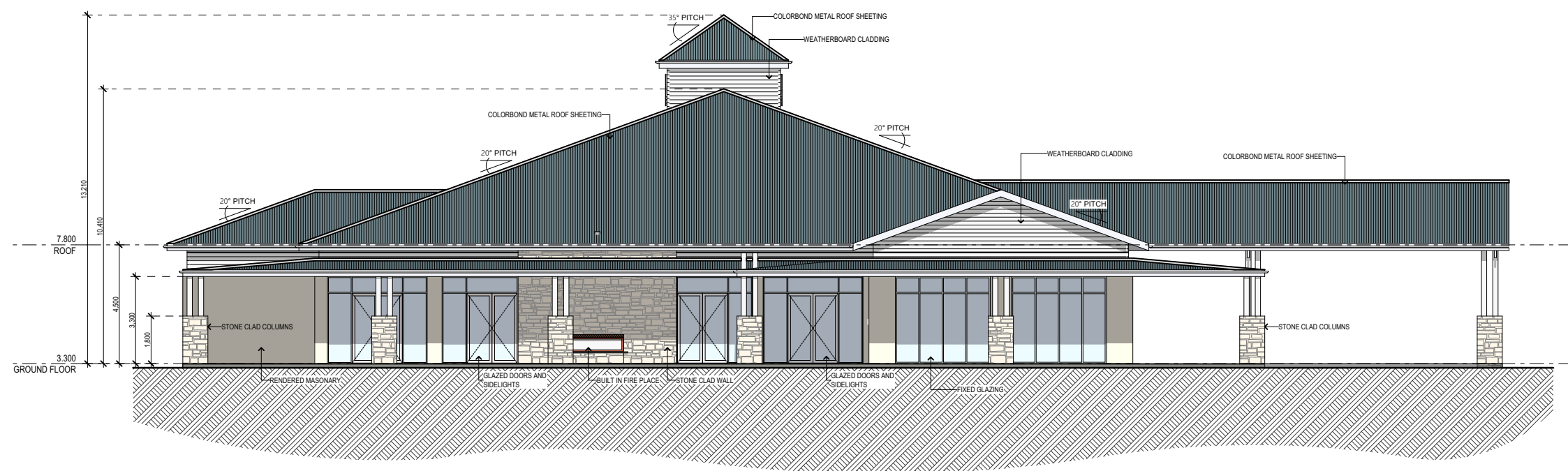
rec centre - floor & roof plan  
scale 1 : 200 @ A1

11843-SK-Rec Centre v21.pln - 31/07/2019  
11843 - a200 - Sept '18 - rev [c]

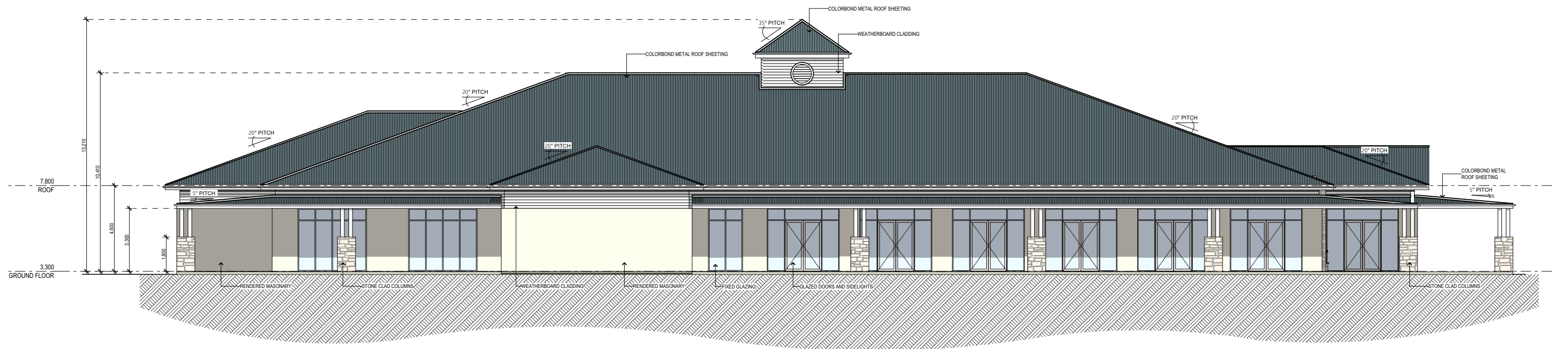


DA

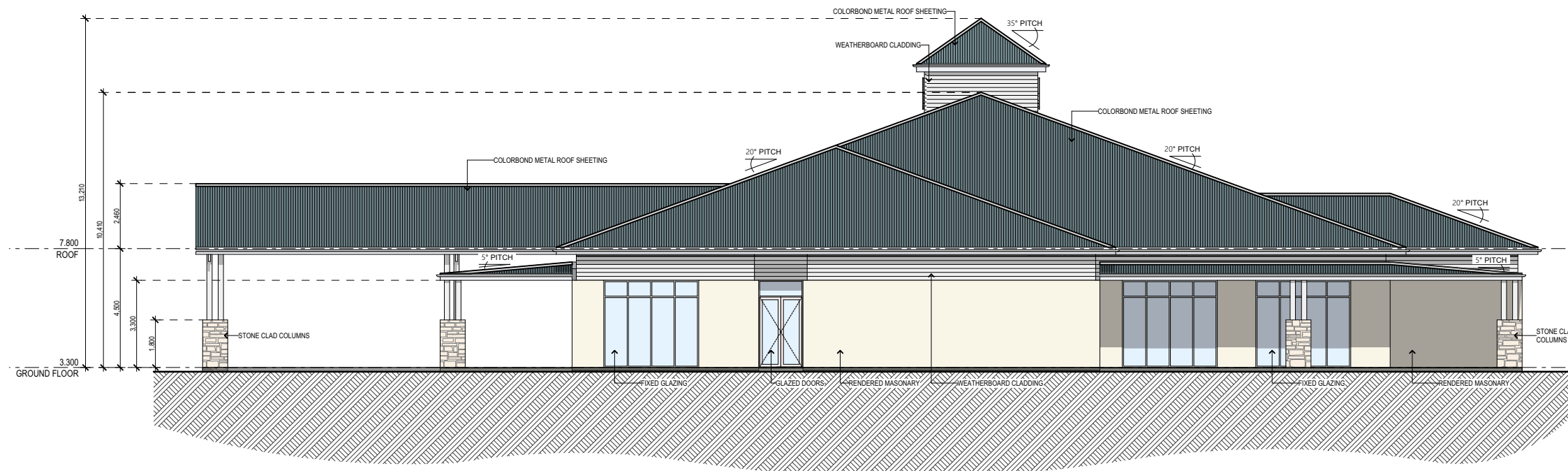




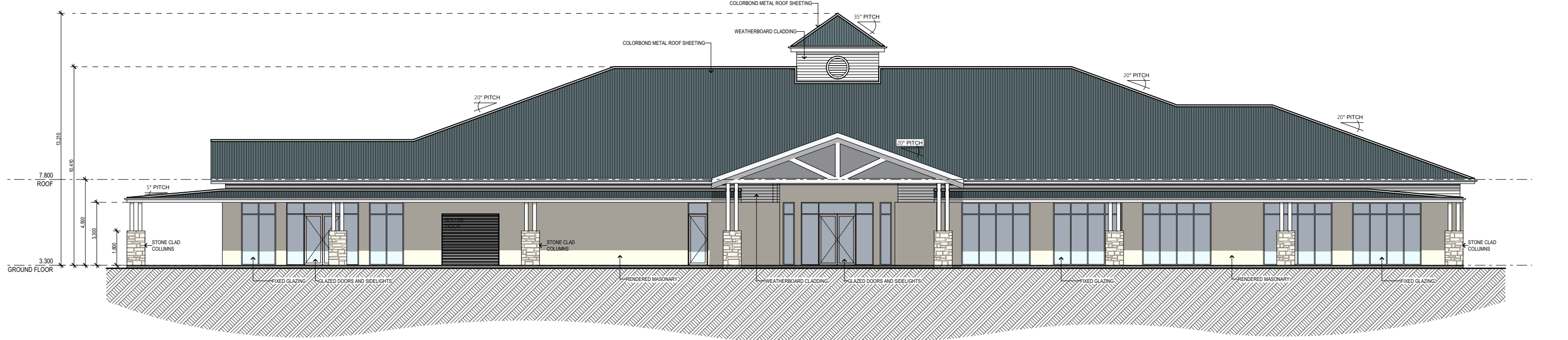
NORTH ELEVATION



EAST ELEVATION



SOUTH ELEVATION



WEST ELEVATION

DA

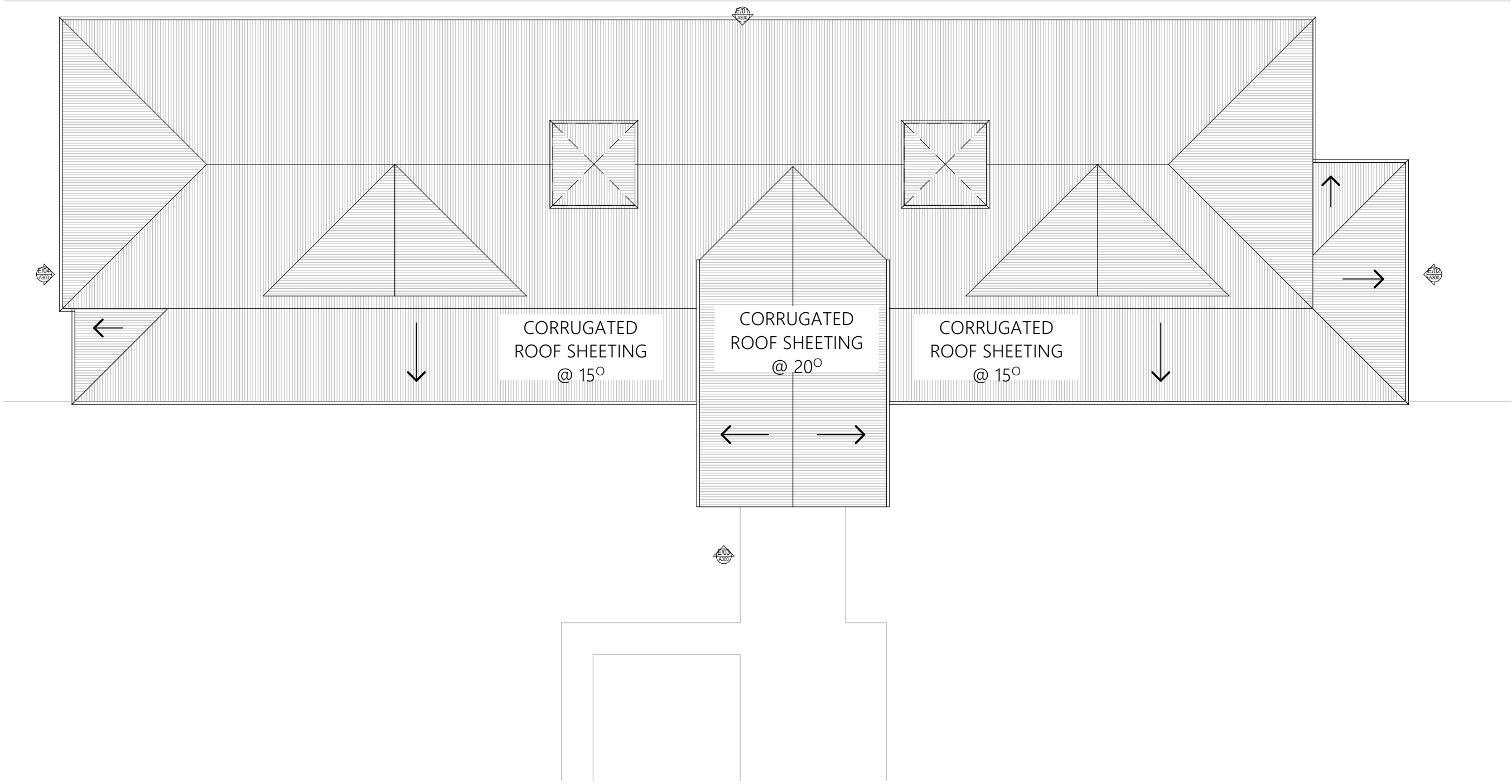
# Harrington Waters Lifestyle Village

rec centre - elevations  
scale 1 : 200 @ A1

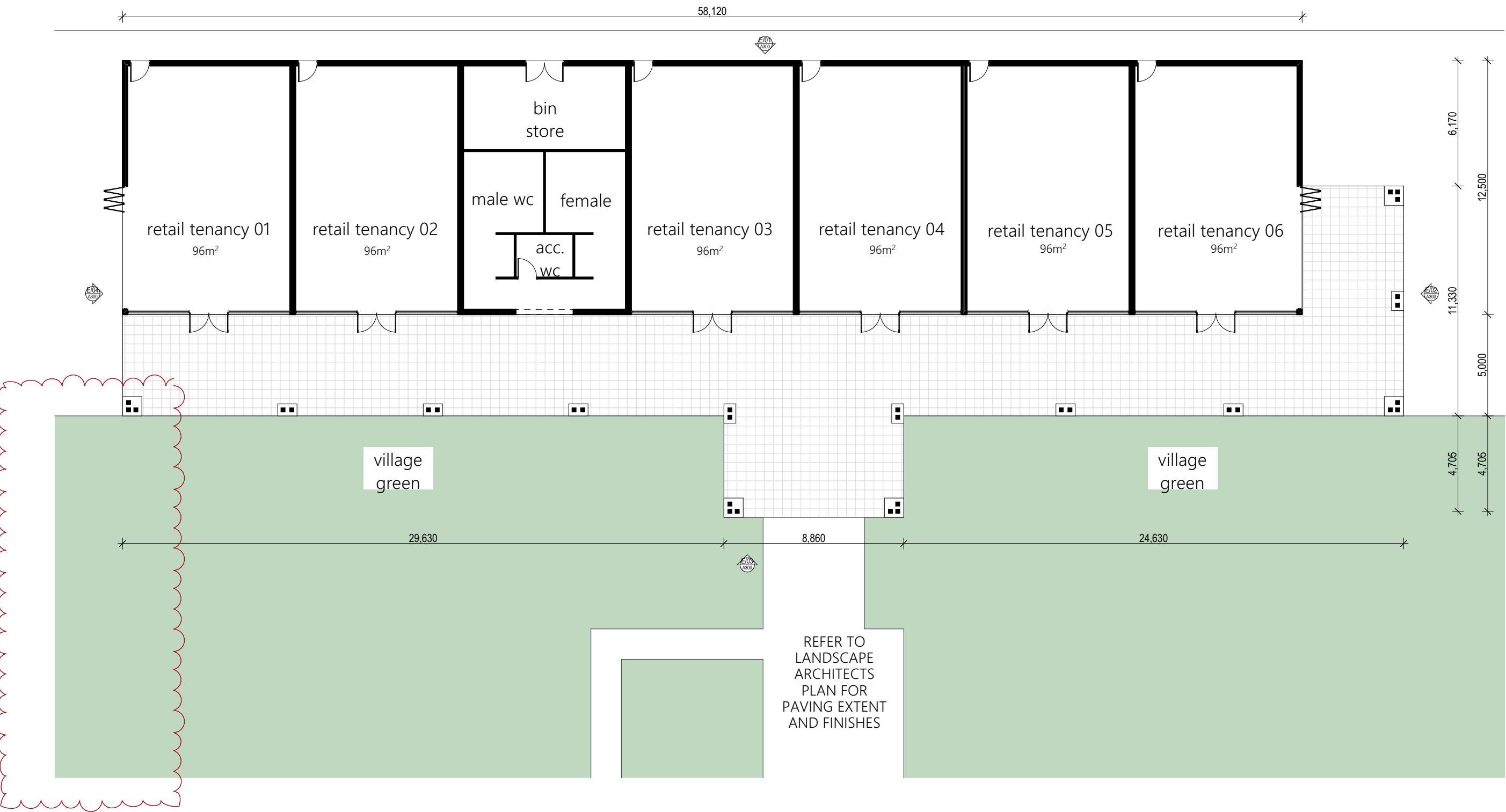


FLOOR AREAS

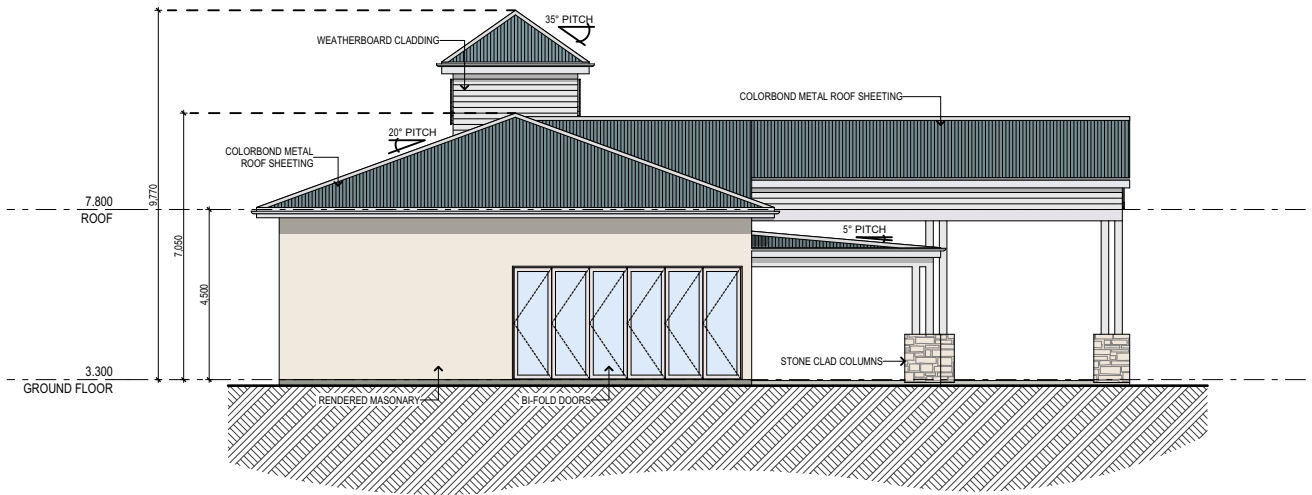
IND. TENANCY = 96m<sup>2</sup>  
RETAIL = 690m<sup>2</sup>



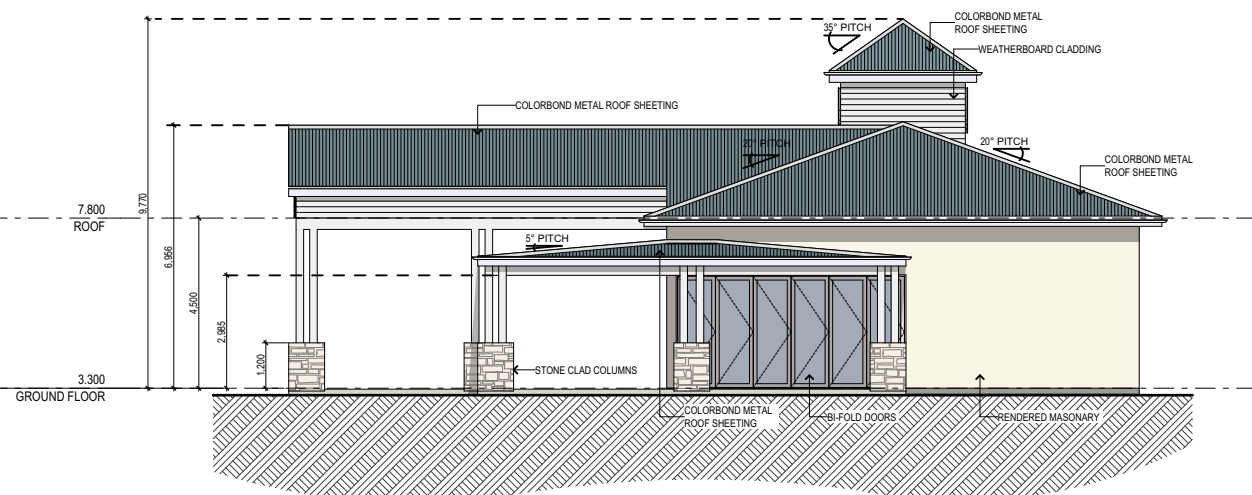
RETAIL ROOF PLAN



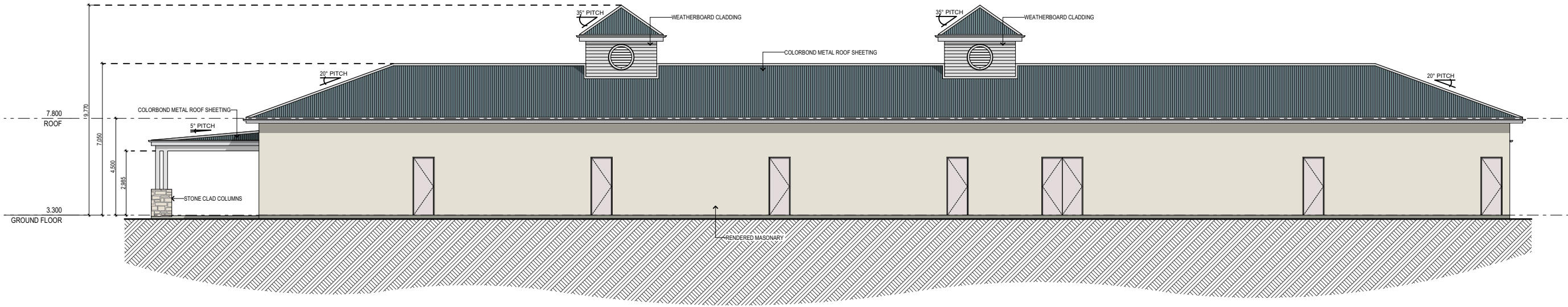
RETAIL FLOOR PLAN



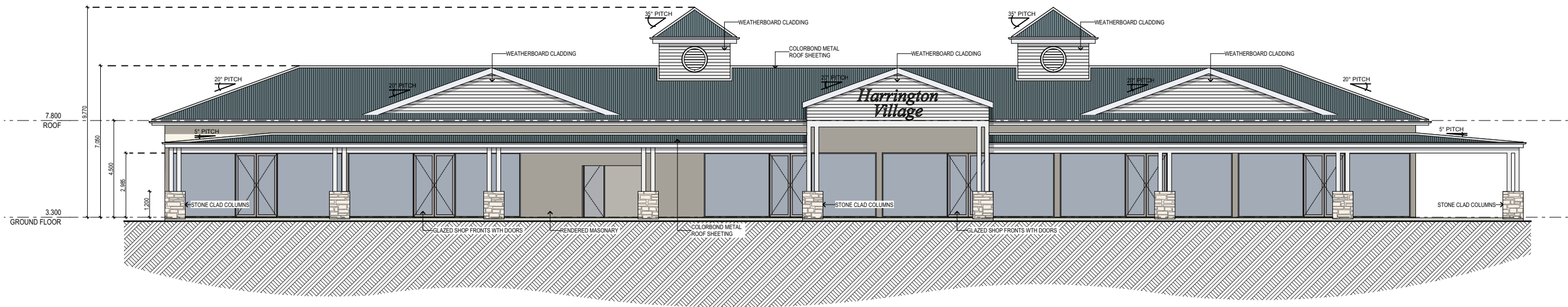
NORTH ELEVATION



SOUTH ELEVATION



EAST ELEVATION

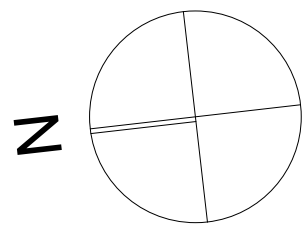


WEST ELEVATION

EJE ARCHITECTURE  
ACN 002 912 843 | ABN 82 644 649 849  
Nominated Architect - Bernard Collins  
NSW Architects Registration No.4438  
A 412 KING STREET NEWCASTLE NSW 2300 AUSTRALIA  
P +61 2 4929 2353 | F +61 2 4926 2300 | E mail@eje.com.au | W www.eje.com.au

COMPLETION OF THE QUALITY ASSURANCE CHECKS IS VERIFICATION THAT THE DOCUMENT CONFORMS WITH THE REQUIREMENTS OF THE QUALITY PROJECT PLAN. WHERE THE QUALITY ASSURANCE CHECK IS INCOMPLETE THIS DOCUMENT IS PRELIMINARY FOR INFORMATION PURPOSES ONLY. OR SUCH PURPOSES AS STATED IN THE REVISION COLUMN.

THE IDEAS, INFORMATION AND CONCEPTS CONTAINED IN THIS DOCUMENT ARE THE PROPERTY OF EJE ARCHITECTURE. PHOTOCOPYING OR REPRODUCING THIS DOCUMENT AND PASSING IT ONTO OTHERS WITHOUT THE EXPRESS PERMISSION OF EJE ARCHITECTURE IS AN INFRINGEMENT OF COPYRIGHT. ©



0 25mm 100mm 200mm ON ORIGINAL A1

# Harrington Waters Lifestyle Village

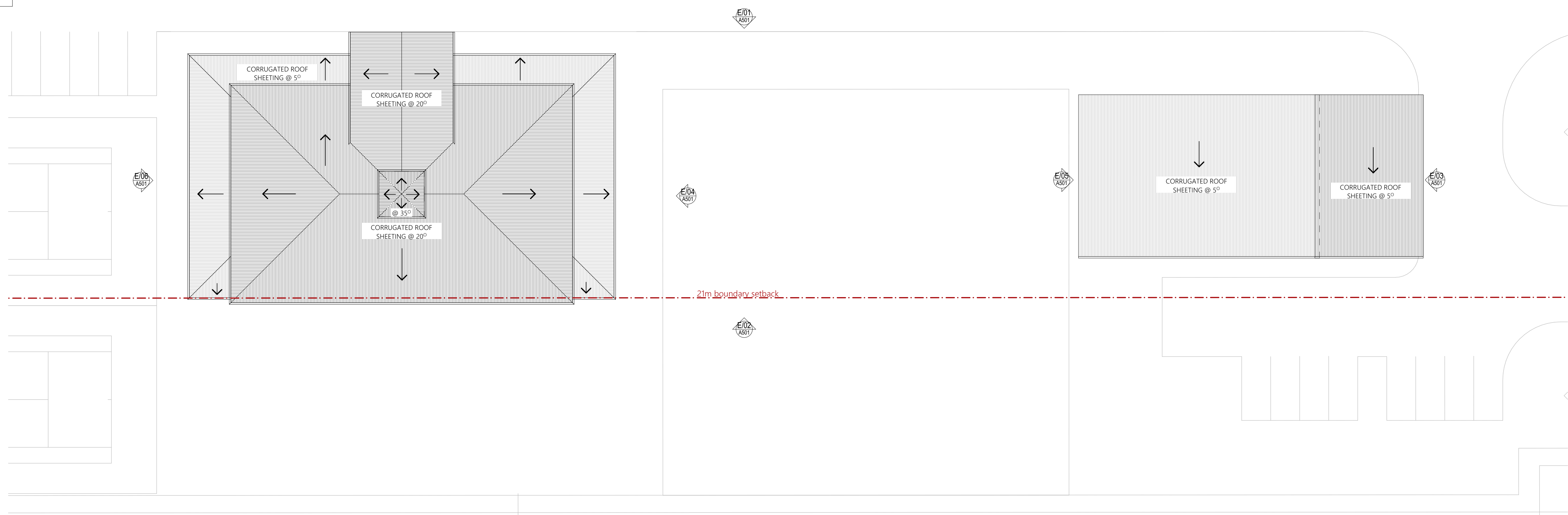
retail tenancies - plans & elevations  
scale 1 : 200 @ A1

11843-SK-Retail v21.pln - 31/07/2019  
11843 - a300 - July '19 - rev [d]

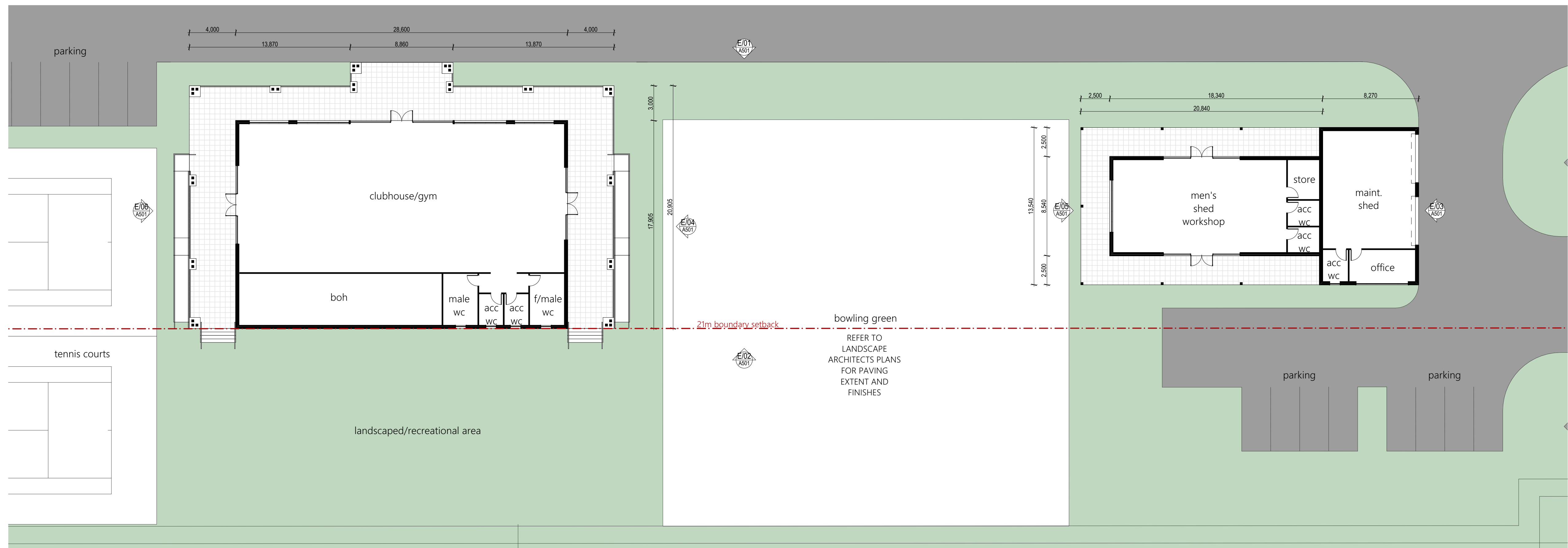
EJE architecture



**FLOOR AREAS**  
**CLUBHOUSE = 510m<sup>2</sup>**  
**MEN'S SHED = 155m<sup>2</sup>**  
**MAINT. STORE = 115m<sup>2</sup>**



CLUBHOUSE & MENS SHED ROOF PLAN

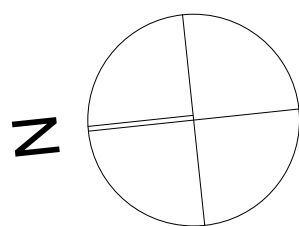


CLUBHOUSE & MENS SHED FLOOR PLAN

**EJE ARCHITECTURE**  
ACN 002 912 843 | ABN 82 644 649 949  
Nominated Architect - Bernard Collins  
NSW Architects Registration No.4438  
A 412 KING STREET NEWCASTLE NSW 2300 AUSTRALIA  
P +61 2 4929 2353 | F +61 2 4926 2300 | E mail@eje.com.au | W www.eje.com.au

COMPLETION OF THE QUALITY ASSURANCE CHECKS IS VERIFICATION THAT THE DOCUMENT CONFORMS WITH THE REQUIREMENTS OF THE QUALITY PROJECT PLAN. WHERE THE QUALITY ASSURANCE CHECK IS INCOMPLETE THIS DOCUMENT IS PRELIMINARY FOR INFORMATION PURPOSES ONLY, OR SUCH PURPOSES AS STATED IN THE REVISION COLUMN.

THE IDEAS, INFORMATION AND CONCEPTS CONTAINED IN THIS DOCUMENT ARE THE PROPERTY OF EJE ARCHITECTURE. PHOTOCOPIING OR REPRODUCING THIS DOCUMENT AND PASSING IT ONTO OTHERS WITHOUT THE EXPRESS PERMISSION OF EJE ARCHITECTURE IS AN INFRINGEMENT OF COPYRIGHT.



0 25mm 100mm 200mm ON ORIGINAL A1

# Harrington Waters Lifestyle Village

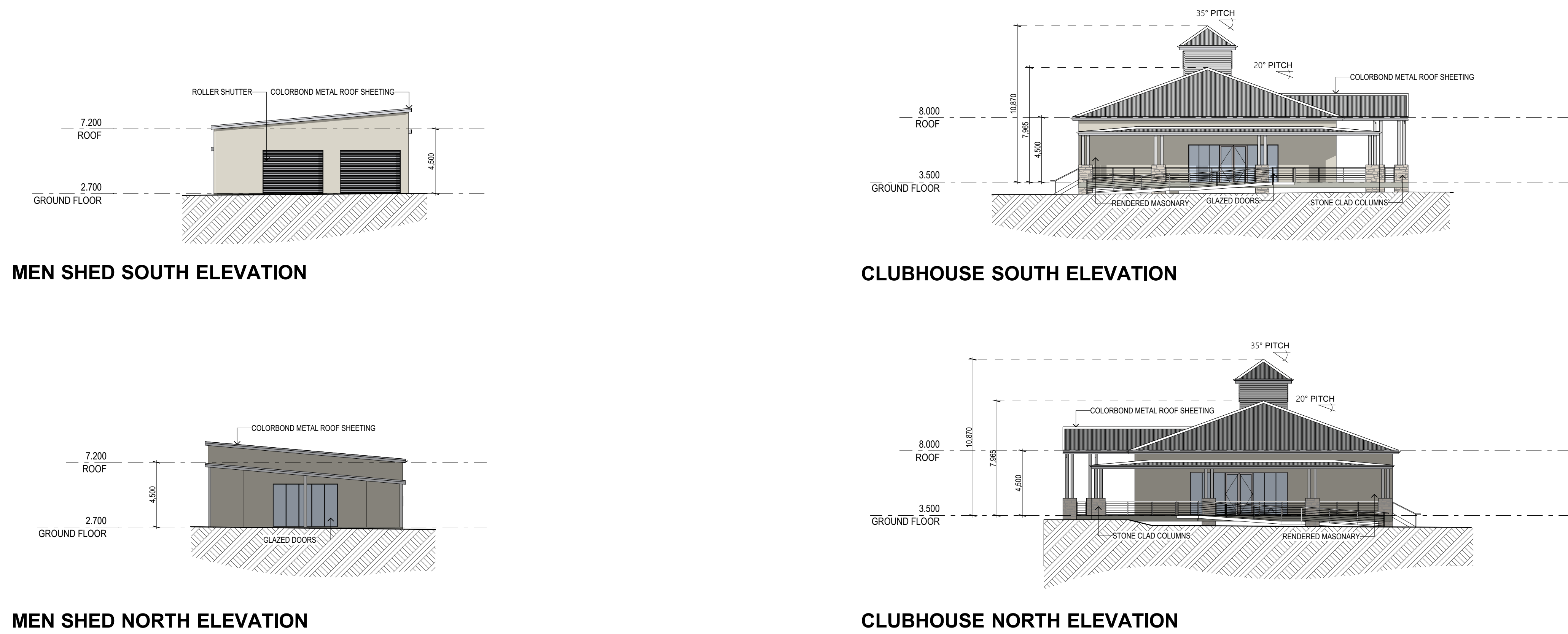
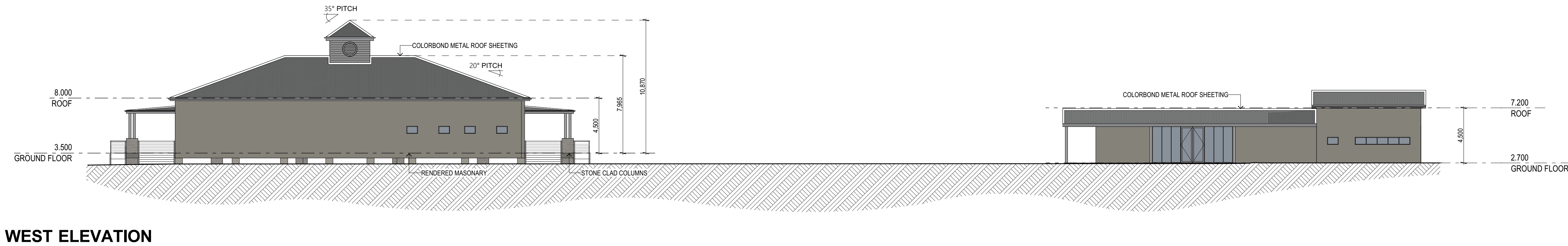
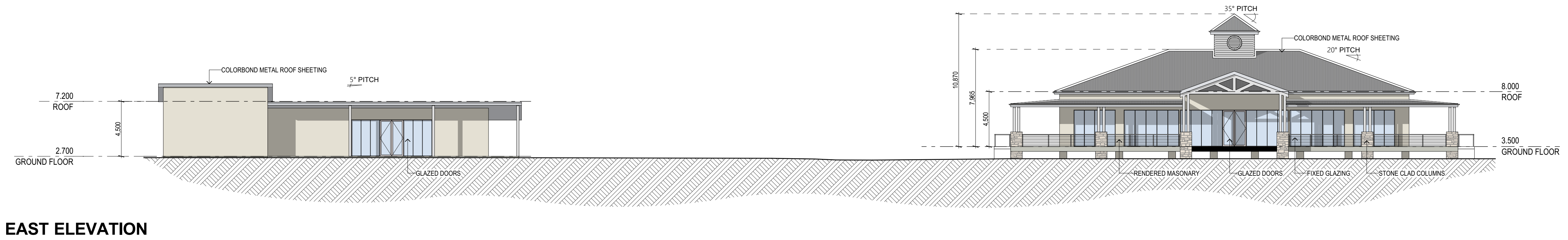
clubhouse & men's shed - floor & roof plan  
scale 1 : 200 @ A1

11843\_Mens Shed-Clubhouse V21.pln - 31/07/2019  
11843 - a500 - Feb. '19 - rev [c]

**EJE** architecture

DA





DA

11843\_Mens Shed-Clubhouse V21.pln - 31/07/2019  
11843 - a501 - Feb. '19 - rev [c]

**EJE ARCHITECTURE**  
ACN 002 912 843 | ABN 82 644 649 949  
Nominated Architect - Bernard Collins  
NSW Architects Registration No. 4438  
A 412 KING STREET NEWCASTLE NSW 2300 AUSTRALIA  
P +61 2 4929 2353 | F +61 2 4926 2300 | E mail@eje.com.au | W www.eje.com.au

COMPLETION OF THE QUALITY ASSURANCE CHECKS IS VERIFICATION THAT THE DOCUMENT CONFORMS WITH THE REQUIREMENTS OF THE QUALITY PROJECT PLAN. WHERE THE QUALITY ASSURANCE CHECK IS INCOMPLETE THIS DOCUMENT IS PRELIMINARY FOR INFORMATION PURPOSES ONLY. OR SUCH PURPOSES AS STATED IN THE REVISION COLUMN.

THE IDEAS, INFORMATION AND CONCEPTS CONTAINED IN THIS DOCUMENT ARE THE PROPERTY OF EJE ARCHITECTURE. PHOTOCOPYING OR REPRODUCING THIS DOCUMENT AND PASSING IT ONTO OTHERS WITHOUT THE EXPRESS PERMISSION OF EJE ARCHITECTURE IS AN INFRINGEMENT OF COPYRIGHT. ©

0 25mm 100mm 200mm ON ORIGINAL A1

# Harrington Waters Lifestyle Village

clubhouse & men's shed - elevations

scale 1 : 200 @ A1

**EJE** architecture





DA

MOTEL REMOVED

11843-Central Facilities v21 [2a].pln - 31/07/2019  
11843 - a700 - July '19 - rev [c]

# Harrington Waters Lifestyle Village

central facilities - 3D perspectives  
scale NTS @ A1

**EJE** architecture